



# **OT-4NX**

## **Owner's Manual**



Publication Date: 05/2015  
Publication Number: 701288, Rev. 1

This document provides information proprietary to *WATERAX* Inc. and cannot be used or disclosed without *WATERAX*'s written authorization.

*WATERAX* Inc. reserves the right to make changes without notice in its products or components as research and development or marketing conditions warrant. Changes affecting the operation of any component in this manual will be reflected in a subsequent revision. *WATERAX* Inc. assumes no responsibility for any omissions or errors that may appear in this document or for any damages that may result from the use of information contained herein.

The following are trademarks or brand names of *WATERAX* Inc.: *WATERAX*, '*WE MOVE WATER*'. All other trademarks used in this manual are the exclusive property of their owner.

OT-4NX Owner's Manual  
Publication No.: 701288, Rev. 1  
Publication Date: 05/2015  
First Edition: May 2015

Published by:  
*WATERAX* Inc.  
6635 Henri-Bourassa W.  
Montreal, Quebec, CANADA  
H4R 1E1

Copyright © 2015 *WATERAX* Inc.  
All rights reserved

Printed in Canada

# Contents

<b>Important Safety Instructions .....</b>	<b>2</b>
Personal Safety Advisory .....	2
Warnings .....	2
<b>Preventing Damage to Equipment.....</b>	<b>2</b>
<b>Introduction .....</b>	<b>3</b>
About this Manual .....	3
About the OT-4NX .....	3
Parts Identification .....	4
<b>Operating the OT-4NX .....</b>	<b>4</b>
Pre-Operation Checklist .....	4
Filling.....	4
Spraying .....	4
Basic Care and Storage .....	5
<b>Service .....</b>	<b>6</b>
Parts Breakdown .....	6
Disassembly and Assembly Tools .....	7
<b>Warranty.....</b>	<b>9</b>

# Important Safety Instructions

It is recommended that all information provided in this manual be carefully read and understood before performing any operation of or maintenance to the equipment.

The procedures listed in this manual are general operating and maintenance procedures. They should be taken in addition to any procedures, policies and guidelines established by the authority having jurisdiction. Where conflicts arise, all parties (authority having jurisdiction and *WATERAX* Inc.) will need to be contacted to determine the best resolution. The solution will need to address the safety of the operator along with the proper performance and life expectancy of the unit.

## Personal Safety Advisory

**READ THIS MANUAL BEFORE OPERATING YOUR EQUIPMENT!**

The improper use of the *WATERAX* backpack pump could result in injuries as well as damage to the equipment. Any operator should familiarize himself with the equipment and its capabilities before trying to operate the equipment in an emergency situation. Please read this entire manual before using your *WATERAX* backpack pump and follow all Personal Safety Advisories.

## Warnings



- Always wear eye protection when operating the backpack pump.
- Do not operate if mentally or physically fatigued.
- No modifications and/or alterations may be made to the equipment. Any such modifications not only void the warranty but can make the unit dangerous to anyone operating it.
- Never use flammable liquids, caustics, acids or hot water in the tank.
- Do not leave unit in the sun when not in use.
- Always inspect hose and connections before each use.
- Do not store or use chemicals in the tank.
- Keep the unit out of the reach of children.

## Preventing Damage to Equipment

The following recommendations will help avoid damage to your equipment:

- Flush the hand pump and tank with fresh water if it has been used to pump salty, brackish, high mineral content water, water containing debris, or foam injected water. Check that debris is cleared before using hand pump again.
- Always use the fill strainer when filling the tank.
- Clean and rinse hand pump and tank with clean water after each use.
- For storage, completely drain the hand pump, tank and hose of all water.
- Store in a cool and dry area.

# Introduction

## About this Manual

This manual contains general operation, care and servicing procedures for the *WATERAX* OT-4NX consisting of a water tank paired with a hand pump.

Please see [www.waterax.com](http://www.waterax.com) additional documentation related to this product such as the *WATERAX* product guide, technical notes, news and other updates about *WATERAX* and its goods and services.

## About the OT-4NX

### Features

For full specifications, see the Product Data Sheet.

Applications of the *WATERAX* OT-4NX include:

- Hot spotting
- Mop-up
- Prescribed burn operations
- Campsite protection
- Industrial operations

Features and Benefits of the *WATERAX* OT-4NX include:

### Tank:

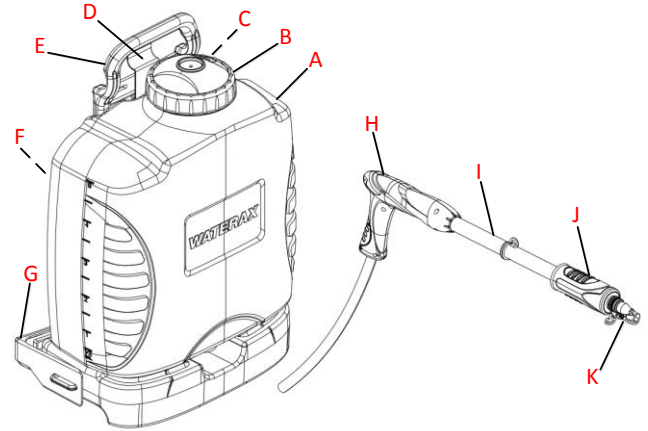
- Made of UV and corrosion resistant polyethylene
- Integrated lumbar support
- Durable brass elbow fitting for hose connection to tank
- Carry handle also functions as storage for the hand pump
- Comfortable and ergonomic
- Comfortable shoulder straps
- Delivered assembled
- Water level indicators (US Gallons & Liters)

### Hand Pump:

- All brass & stainless steel construction
- Sturdy and ergonomic nylon rear pistol grip
- Dual nozzle allows for quick switch from stream to spray
- Field repairable
- Locking feature
- D-ring for clipping to shoulder straps
- Ambidextrous

## Parts Identification

- A. Water tank
- B. Fill cap
- C. Fill strainer (not shown)
- D. Carry handle
- E. Hand pump support
- F. Shoulder straps (not shown)
- G. Lumbar support
- H. Pistol grip
- I. Brass hand pump
- J. Rubber grip
- K. Dual nozzle (straight stream and spray)



## Operating the OT-4NX

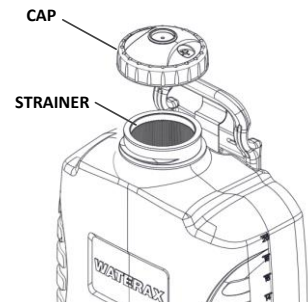
### Pre-Operation Checklist

Before using your backpack pump, follow this verification procedure:

1. Visually inspect product.  
When you first receive your OT-4NX backpack pump, inspect the product and check for any damage. Notify the supplier if any damage is found.
2. Check that the hose is structurally sound and does not leak.
3. Inspect the straps for fraying (unravelling of the fabric) and verify that they are in good condition before carrying the backpack pump.
4. Each time you plan to use the backpack pump, check for damage that may have occurred during previous use. Notify your manager that the equipment requires repair. Remember that damaged equipment can expose you to safety hazards.

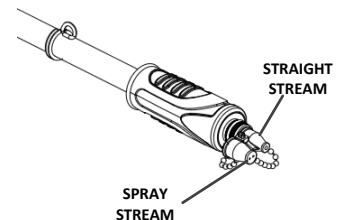
### Filling

1. Remove the cap from the tank
2. Make sure the fill strainer is in place in the neck of the tank before filling.
3. Fill the tank to desired level.
4. Install the cap and tighten securely.



### Spraying

1. Determine the stream pattern that fits your application. The single-hole nozzle provides the straight stream option and the dual-hole nozzle provides the spray stream option.
2. Install the appropriate nozzle onto the hand pump, tighten securely.
3. Operate the hand pump by sliding the handle in and out of the pump body. The hand pump will fill the line with water on the "out" stroke and discharge on the "in" stroke.



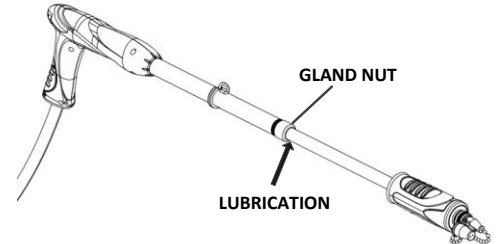
## Basic Care and Storage

The basic care described in this section does not require any disassembly of the hand pump. For any servicing procedures that requires disassembly, please see the Service section.

### Regular maintenance

After each use:

1. Visually inspect the unit.
2. Pump clean water through the hand pump to remove any dirt or debris.
3. Apply some lubrication at the gland nut to ease the pump operation.
4. Rinse the tank with clean water.
5. Check the cap air vent and cap gasket for signs of wear and replace as required.
6. Remove any debris from the fill strainer basket.
7. Check the straps for signs of fraying or excessive wear, replace as required.
8. Note and report any performance irregularities or any abnormal mechanical sounds.



### Long-term storage and winterizing

1. Completely drain the tank, hand pump and hose of all water.
2. Leave the cap off the tank.
3. Store in a cool and dry area.

# Service

This section includes the parts breakdown and tools required for the disassembly of the WATERAX OT-4NX backpack pump.

Note: It is recommended that all fasteners be replaced with genuine WATERAX parts.

## Parts Breakdown

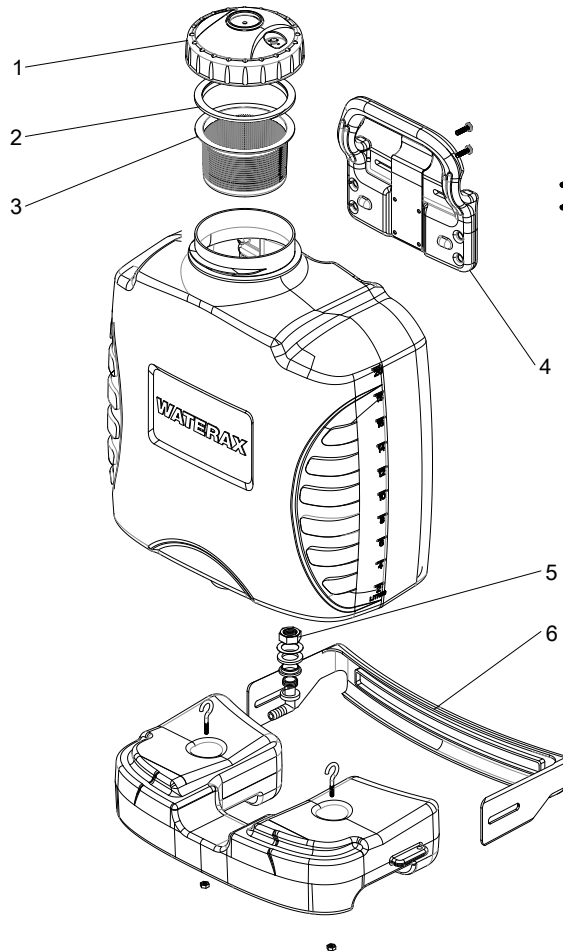


Figure 1: Exploded view of OT-4NX (tank)

ID	ITEM NO	DESCRIPTION	QTY
1	701144	CAP ASSEMBLY FOR OT-4NX	1
2	701143	CAP GASKET FOR OT-4NX	1
3	701145	STRAINER BASKET FOR OT-4NX	1
4	701146	HANDLE ASSEMBLY FOR OT-4NX	1
5	701147	HOSE CONNECTOR KIT FOR OT-4NX	1
6	701151	LUMBAR SUPPORT FOR OT-4NX	1
-	701148*	SHOULDER STRAP ASSEMBLY FOR OT-4NX	1

\* Not shown



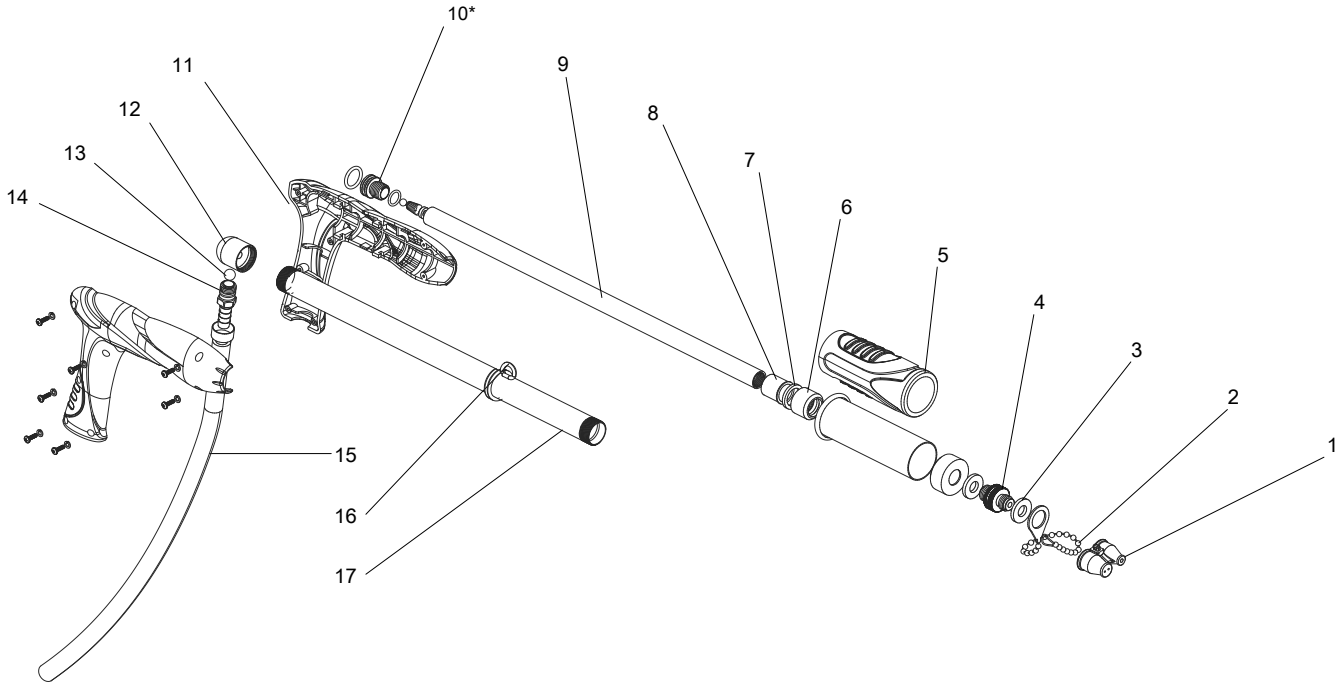


Figure 2: Exploded view of HPC-X (hand pump).

ID	ITEM NO	DESCRIPTION	QTY
-	250251	HPC-X WATERAX HAND PUMP WITH HOSE	-
1	701128	NOZZLE TIP FOR HPC-X	1
2	701141	NOZZLE CHAIN FOR HPC-X	1
3	701126	NOZZLE GASKET FOR HPC-X	2
4	701127	NOZZLE ADAPTOR FOR HPC-X	1
5	701129	HAND GRIP ASSEMBLY KIT FOR HPC-X	1
6	701132	BRASS CAP NUT FOR HPC-X	1
7	701133	FELT WIPER RING FOR HPC-X	1
8	701130	PLATIC BUSHING FOR HPC-X	1
9	701131	INSIDE CYLINDER FOR HPC-X	1
10*	701136	PISTON ASSEMBLY FOR HPC-X	1
11	701137	PISTOL GRIP ASSEMBLY KIT FOR HPC-X	1
12	701138	INLET CAP FOR HPC-X	1
13	701142	BALL STAINLESS STEEL FOR HPC-X	1
14	701139	CONNECTOR FOR HPC-X	1
15	701150	HOSE ASSEMBLY (INCLUDE 2 HOSE CLAMPS) FOR OT-4NX	1
16	701135	PUMP LOOP FOR HPC-X	1
17	701134	OUTSIDE CYLINDER FOR HPC-X	1

\* May need to replace on a regular basis during hand pump maintenance.

## Disassembly and Assembly Tools

### Tools Required

- SAE Socket wrench with the following socket:
  - 8 mm
  - 22 mm
- SAE Flat blade screwdriver
- SAE Phillips screwdriver

# Notes

Lined area for taking notes, consisting of multiple horizontal lines.

# Warranty

**WHEREAS** subject to the following general and specific terms and conditions, WATERAX Inc. (the “**Seller**”) hereby warrants to the original purchaser of the products from WATERAX, (the “**Purchaser**”) that its products, including any pump parts products manufactured by WATERAX (the “**Products**”) sold under Seller’s brands will be free of defects in material and workmanship for the applicable Warranty Period (as set out in full at [www.waterax.com/eng/warranty](http://www.waterax.com/eng/warranty)).

Product	Warranty Period	Coverage
4-Stroke Powered Pumps	Two (2) Years	Limited
2-Stroke Powered Pumps	Earlier of One (1) Year or One hundred (100) run hours	Limited
Backpack Pumps	One (1) Year	Limited
Skid Units	One (1) Year	Limited
Control Panels, Electronics Manifolds	One (1) Year	Limited
Genuine Parts	Ninety (90) Days	Limited

## 1. Limitations, exclusions and other terms and conditions applicable for all Products:

- a. The Warranty shall be voided upon the occurrence of any of the following events: (a) the Product is used for an application, with products or in a manner other than the application, products and manner for which such Product is designed and intended; (b) the Product is subjected to a use, service, condition or environment other than a use, service, condition or environment for which such Product is designed and intended; (c) the Product is not properly installed by the Purchaser or its agent or representative; (d) the Product is not properly tested and maintained in accordance with Seller’s product manuals and supplemental instructions and guidelines, applicable industry standards and guidelines, and applicable legal and regulatory requirements; (e) the Product is altered, modified, serviced (with the exception of routine maintenance performed in accordance with the Seller’s product manuals and supplemental instructions as set out in full at [www.waterax.com/eng/warranty](http://www.waterax.com/eng/warranty), and industry accepted standards and guidelines), or repaired by a person other than the Seller or a person authorized by the Seller to make such alteration or modification or perform such service or repair; (f) the Seller is not paid the full amount of the purchase price for the Product when due; (g) any bad faith invocation of a warranty claim or breach of a purchase agreement by the Purchaser.
  - b. The following are excluded from Warranty coverage: (a) non-defective parts worn, exhausted or consumed through normal usage of the Product; (b) any consumable parts normally subject to routine replacement, including but not limited to pump packing, O-rings, gaskets, intake screens, anodes or filters; (c) routine maintenance as specified and in accordance with the Seller’s product manuals and supplemental instructions and guidelines as set out in full at [www.waterax.com/eng/warranty](http://www.waterax.com/eng/warranty); (d) failure due to compliance with a specification or design provided or required by Purchaser; (e) failure due to improper operation, excess pressure, excess voltage, abuse, misuse, negligence or accidents or other similar causes; (f) failure due to operator error; (g) damage during or after shipment and failure attributable thereto or resulting there from; (h) failure attributable to or resulting from the failure or substandard, inadequate or improper performance of any part, component or equipment not supplied by the Seller; (i) failure attributable to or resulting from the failure or substandard, inadequate or improper performance of any third party part, component, product or equipment, whether or not combined, packaged, incorporated, installed or used with a Seller brand part, component, product or equipment.
2. **Claim Procedure.** The claim procedure applicable under this warranty, including any applicable notice and documentation requirements, are set out in full at [www.waterax.com/eng/warranty](http://www.waterax.com/eng/warranty) and constitute an essential term of this Warranty.
  3. **Repaired and Replacement Product.** If requested to do so by the Purchaser the Seller may, at its sole option and in its sole discretion, supply a replacement Product or part to the Purchaser prior to making a final determination as to whether Warranty Coverage is available.

If the Seller ultimately determines that no Warranty Coverage is available for a Product claimed to be defective, the Purchaser shall have the option of either (a) having the Product returned to it freight collect without repair or replacement; or (b) if Seller determines that the Product is repairable, have the Product repaired by Seller or another party designated by it on a time and materials basis at Seller’s then current standard charges for non-warranty repairs and then returned to Purchaser freight collect. The Seller reserves the right to use reconditioned parts for Warranty repairs and to use reconditioned Products for Warranty replacements. Repaired Product and replacement Product shall be warranted only for the remainder of the original Warranty Period.

4. **Limitation of Liability:** SELLER’S WARRANTY AS SET FORTH HEREIN IS SELLER’S SOLE AND EXCLUSIVE WARRANTY AND IS IN LIEU OF ALL OTHER WARRANTIES, EXPRESS OR IMPLIED, INCLUDING, BUT NOT LIMITED TO, ALL WARRANTIES OF MERCHANTABILITY, QUALITY, COURSE OF DEALING, USAGE OF TRADE, FITNESS FOR A PARTICULAR PURPOSE AND NON-INFRINGEMENT. THE RIGHTS AND REMEDIES SET FORTH HEREIN ARE THE SOLE AND EXCLUSIVE RIGHTS AND REMEDIES AGAINST SELLER, EXCEPT FOR THE SPECIFIC LIABILITIES AND OBLIGATIONS PROVIDED HEREIN, SELLER SHALL HAVE NO LIABILITY OR OBLIGATION WITH RESPECT TO ANY PRODUCT CLAIMED TO BE DEFECTIVE IN ANY MANNER.



**WATERAX Inc.**  
6635 Henri-Bourassa W.  
Montreal, QC H4R 1E1

**TF 855-616-1818**

T 514-637-1818  
F 514-637-3985

info@[WATERAX.com](mailto:info@WATERAX.com)  
[www.WATERAX.com](http://www.WATERAX.com)

All information contained in this document including drawings is proprietary to **WATERAX** and may not be copied, reproduced or used in whole or in part without our prior written permission. The information in this document is subject to change without notice. Model displayed with multiple options. Weight and dimensions are approximated and may vary depending on options.